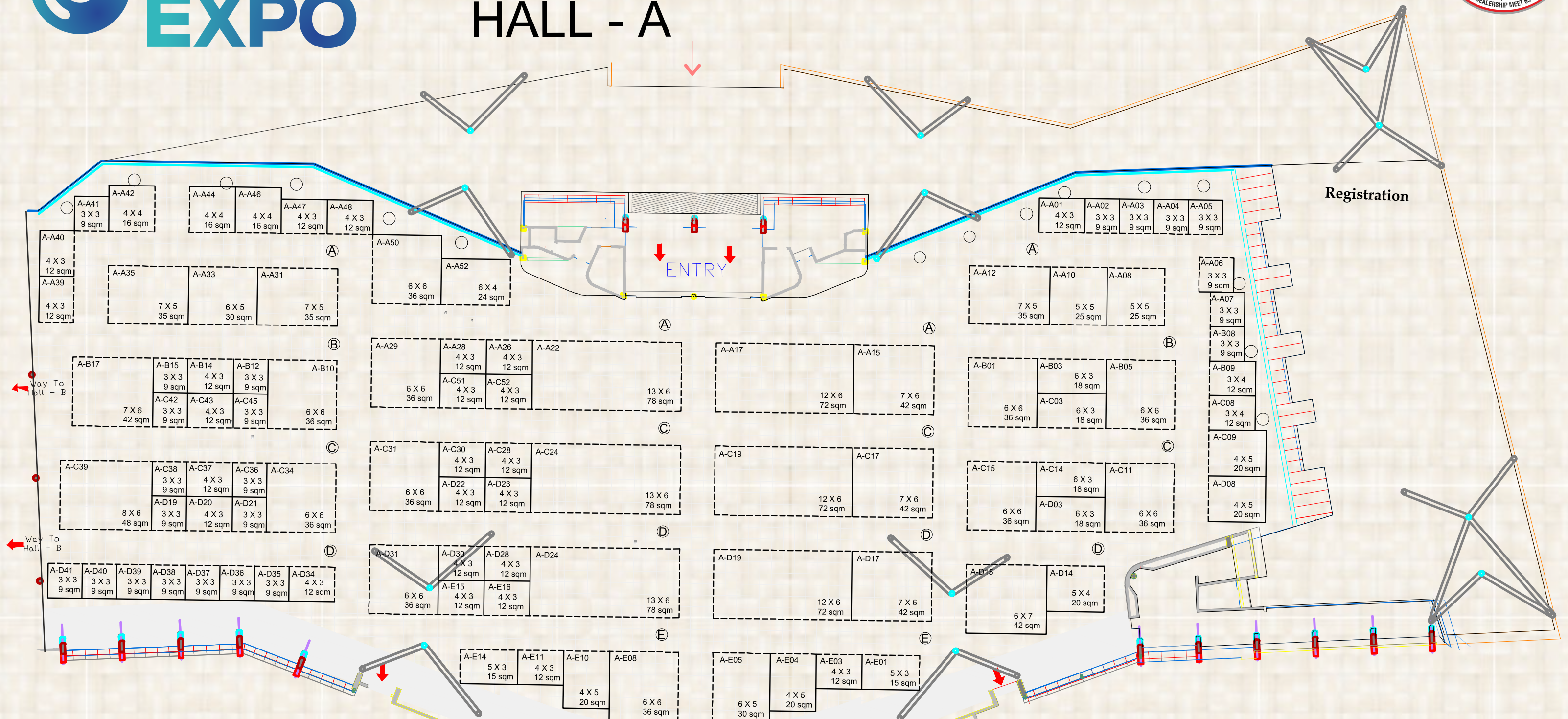
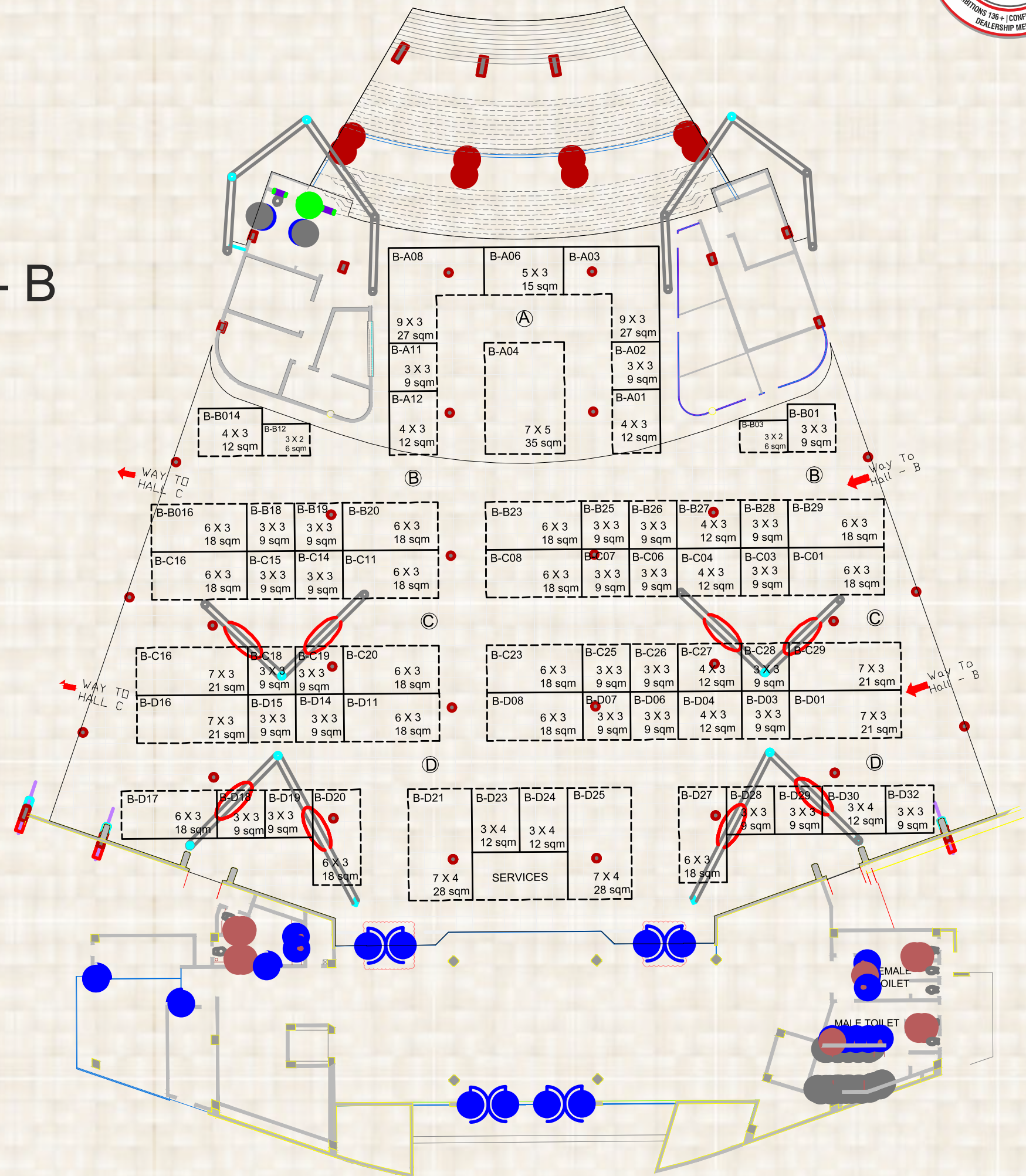


## HALL - A



## HALL - B



Hall-B Gross Area - 1820 sqm Net Area - 922 sqm

Note :- 1. Loading Bearing Capacity - 10 MT/sqm

2. Maximum Height Allowed :- 20 meter

3. Grid - 01 meter X 01 meter

4. Piller Size 0.45 meter X 0.45 meter



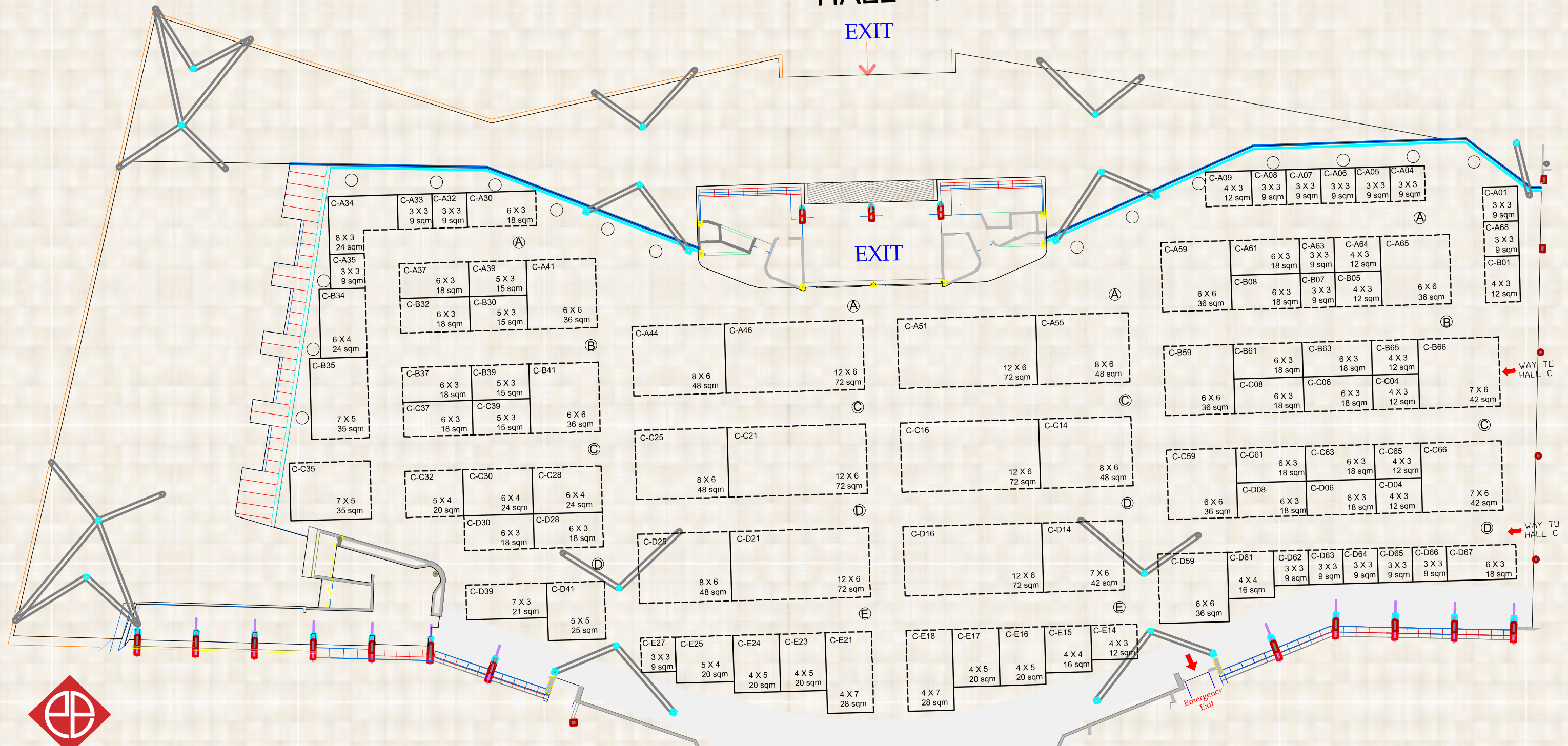
**Paramount  
Exhibitors**

All sizes are in meters

## HALL - C

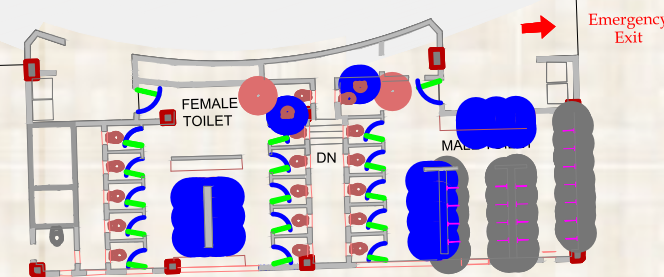
EXIT

EXIT



**Paramount  
Exhibitors**

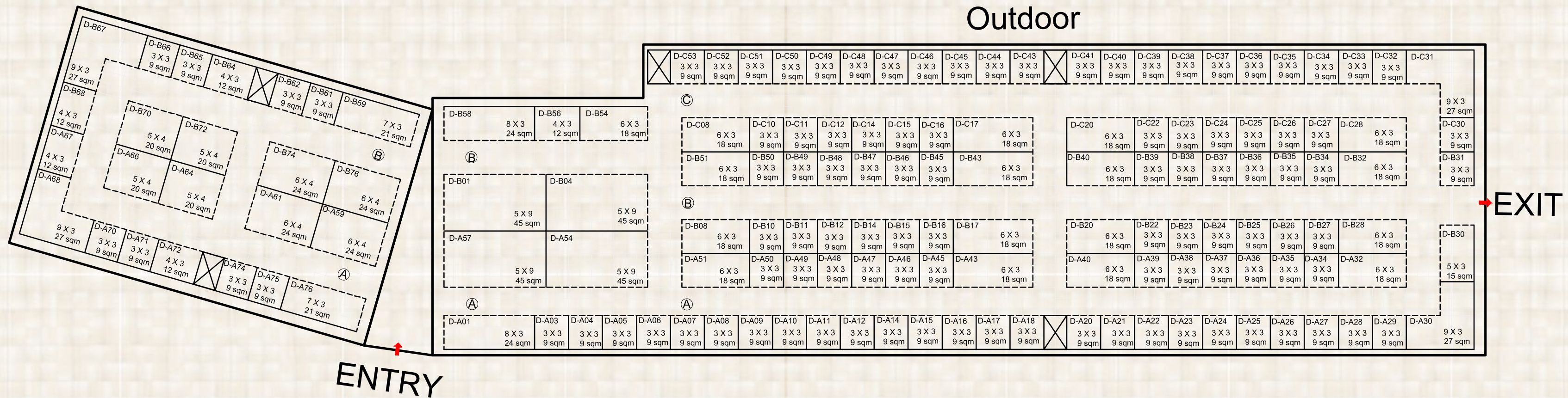
All sizes are in meters



Hall-C Gross Area - 4485 sqm Net Area - 2124 sqm

- Note :-
1. Loading Bearing Capacity - 10 MT/sqm
  2. Maximum Height Allowed :- 20 meter
  3. Grid - 01 meter X 01 meter
  4. Piller Size 0.45 meter X 0.45 meter

## Outdoor



Outdoor Gross Area - 3258 sqm Net Area - 1871 sqm

Note :- 1. Loading Bearing Capacity - 10 MT/sqm

2. Maximum Height Allowed :- 20 meter

3. Grid - 01 meter X 01 meter

4. Piller Size 0.45 meter X 0.45 meter



**Paramount  
Exhibitors**

All sizes are in meters